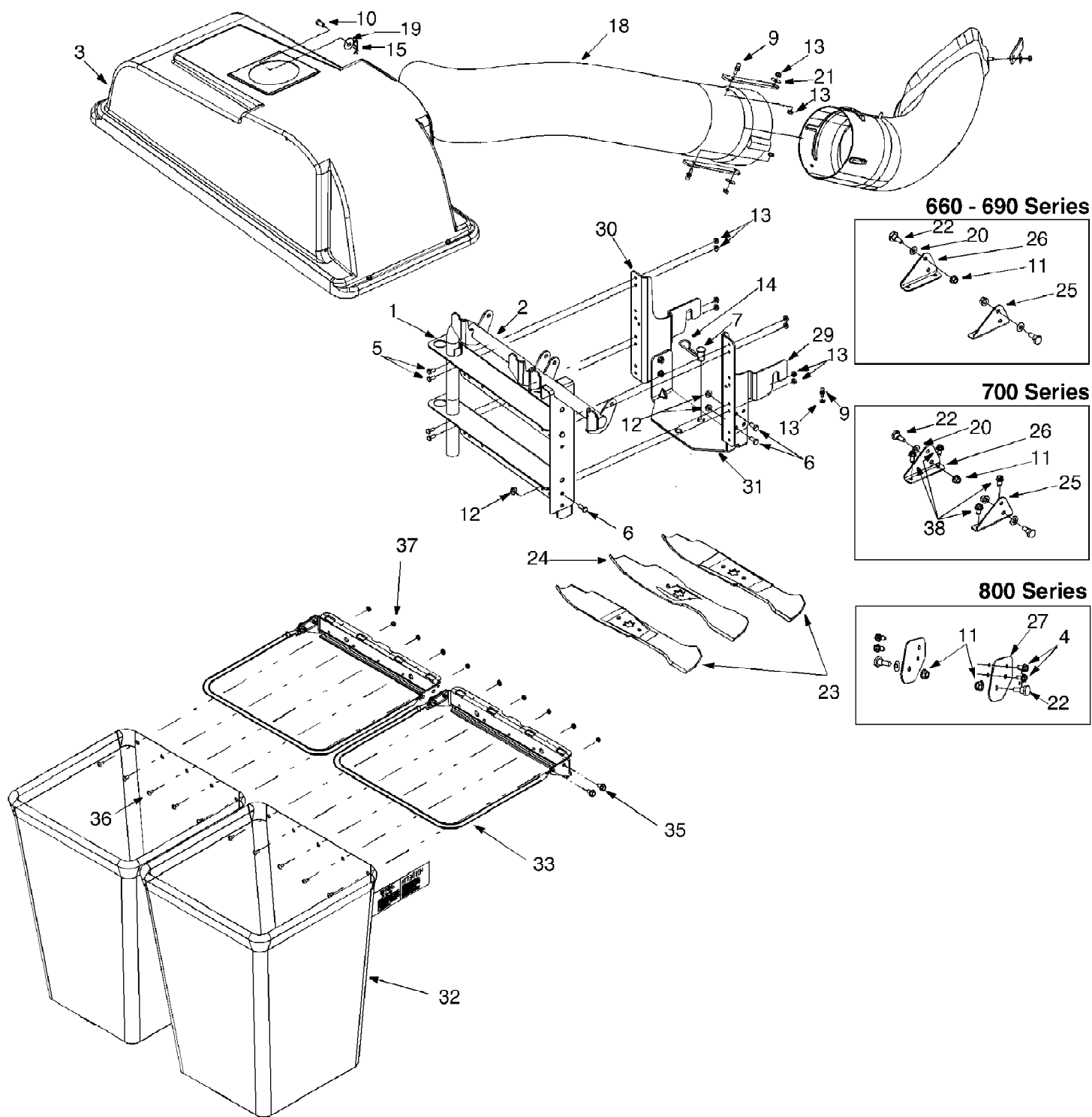


190-180-190 Twin Bagger (2005)  
General Assembly



Ref #	Part Number	Qty	S/P/F	Description
1	16587D	1	S	Support Bracket: Bagger
2	16592	1	S	Support Tube Assembly
3	664-04017	1		Grass catcher Cover Assembly
4	710-0623	1	/P	Self-tapping Screw 3/8-16 x 0.75"
5	710-0751	1	/P	Hex Screw 1/4-20 x0.620
6	710-3008	1	/P	Hex Screw 5/16-18 x 0.75"
7	711-0309A	1	/P	Clevis Pin
	711-0310	1	S	Clevis Pin (on older model tractors)
9	711-04069	1	S	Grass catcher Pin
10	711-1421	1		Clevis Pin
11	712-0459	1	/P	Lock Nut 7/16-20
12	712-3004A	1	/P	Lock Nut 5/16-18
13	712-3027	1	S	Flange Lock Nut 1/4-20
14	714-0117	1	/P	Hairpin Clip
15	714-0145	1	S	Click Pin
16	723-04008	1	S	Chute Strap
17	731-04159	1	S	Discharge Chute 46"
	731-04153	1	S	Discharge Chute 38"/42" Bag
18	731-0926B	1	/P	Catcher Tube
	731-0899E	1	/P	Chute Tube (model 190-180)
19	736-0331	1	/P	Bell Washer
20	736-0407	1		Bell Washer
21	736-3092	1	/P	Flat Washer
22	738-1020	1		Shoulder Screw
23	742-0644	1	S	Blade 16.28" Lg. (model 190-182)
24	742-0645	1	S	Blade 14.88" Lg. (model 190-182)
25	783-04132A	1	S	Supt. Bracket (model 190-180) LH
26	783-04137A	1	S	Supt. Bracket (model 190-180) RH
27	783-04138	1	S	Support Bracket (model 190-182)
28	783-0601	1	S	Mounting Bracket
29	783-0673A	1	S	Hook: Mounting Bracket
30	783-0764A	1	S	Mounting Bracket LH
31	783-0765	1	S	Bracket: Cross Support
32	764-0221	1	S	Catcher Bag
33	749-0701A	1	S	Grass Bag Frame
34	712-0272	1	/P	Hex Sems Nut, #10-24
35	710-0604A	1	/P	Self-tapping Screw, 5/16-18 x .625
36	710-0473	1	/P	Machine Screw, #10-24 x .5
37	16591A	1	S	Bag Hanger Bracket
38	710-0726	1	/P	AB Screw 5/16-12